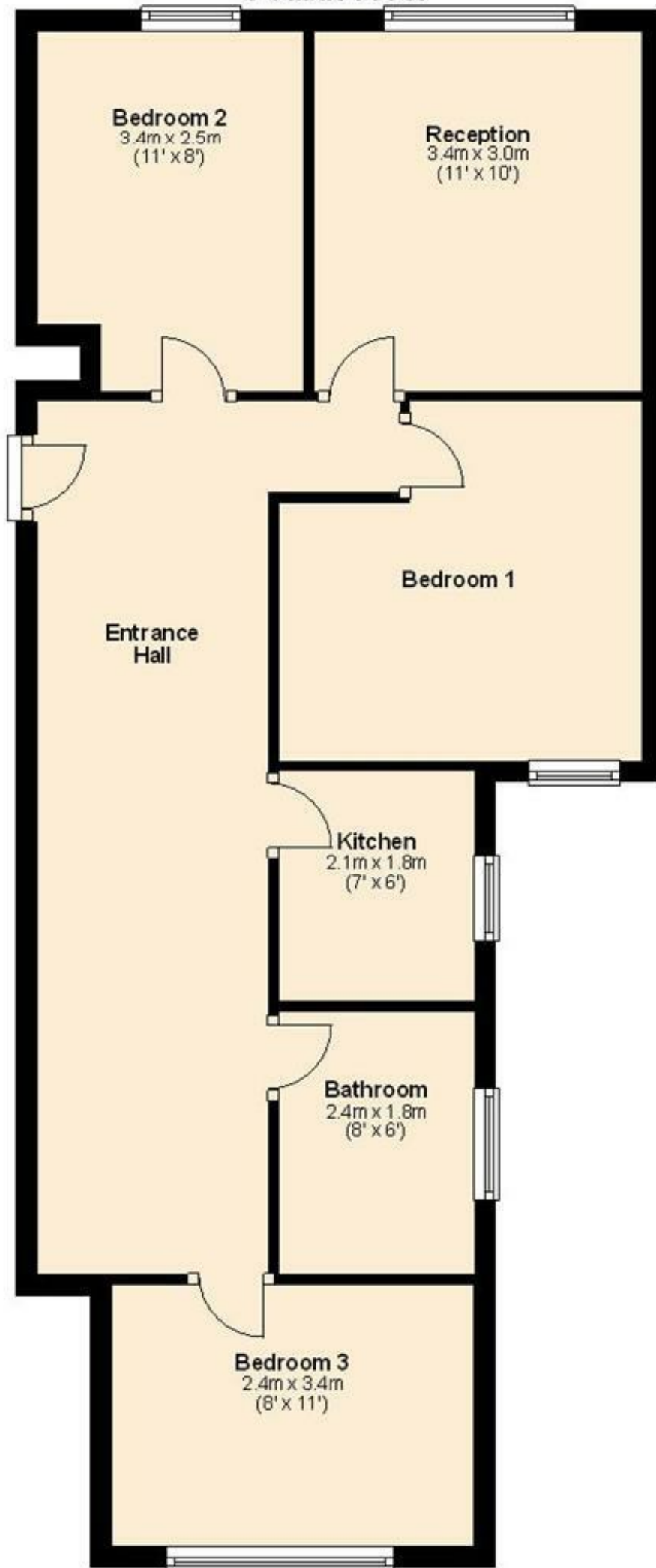




**3 DOUBLE BED FLAT IN HEART OF MAIDA VALE £495 Per Week Furnished**



## Fourth Floor





## Property Overview

Location	Maida Vale, W9
Price	£495 Per Week
Bedrooms	3
Bathrooms	1
Receptions	1
Council	
Tax Band	
Furnishing	Furnished

## Key Features

- 3 Double Bedrooms
- Period Mansion Block
- Communal Garden
- Fourth Floor
- Bright Reception
- Modern Fully Fitted Kitchen
- Modern Bathroom
- NO ADMIN FEES TO TENANTS



## Energy Efficiency Rating

	Current	Potential
Very energy efficient - lower running costs		
(92 plus) A		
(81-91) B		
(69-80) C		
(55-68) D	54	56
(39-54) E		
(21-38) F		
(1-20) G		
Not energy efficient - higher running costs		

England & Wales

EU Directive  
2002/91/EC



## Environmental Impact (CO<sub>2</sub>) Rating

	Current	Potential
Very environmentally friendly - lower CO <sub>2</sub> emissions		
(92 plus) A		
(81-91) B		
(69-80) C		
(55-68) D	48	49
(39-54) E		
(21-38) F		
(1-20) G		
Not environmentally friendly - higher CO <sub>2</sub> emissions		

England & Wales

EU Directive  
2002/91/EC



IMPORTANT NOTICE: All of the information is intended only as a guide to a prospective purchaser and does not constitute any part of an offer or contract. Any measurements or distances referred to herein are approximate only. Any information contained herein (whether in the text, plans or photographs) is given in good faith and cannot be relied upon as being a statement or representation of fact. Should you proceed with the purchase of the property, your solicitor must verify these details. We have not carried out a detailed survey nor tested the services, appliances and specific fittings. In accordance with current legislation we would advise you that the measurements on these particulars are imperial. The formula for conversion to metric is as follows:- 1' (one foot) = 30.4cm (centimetres), 1m (one metre) = 3'29 (feet).