



Springfield Road, London £530,000 null

Set in arguably one of St Johns Woods most sought after streets is this two double bedroom apartment in Springfield Road.

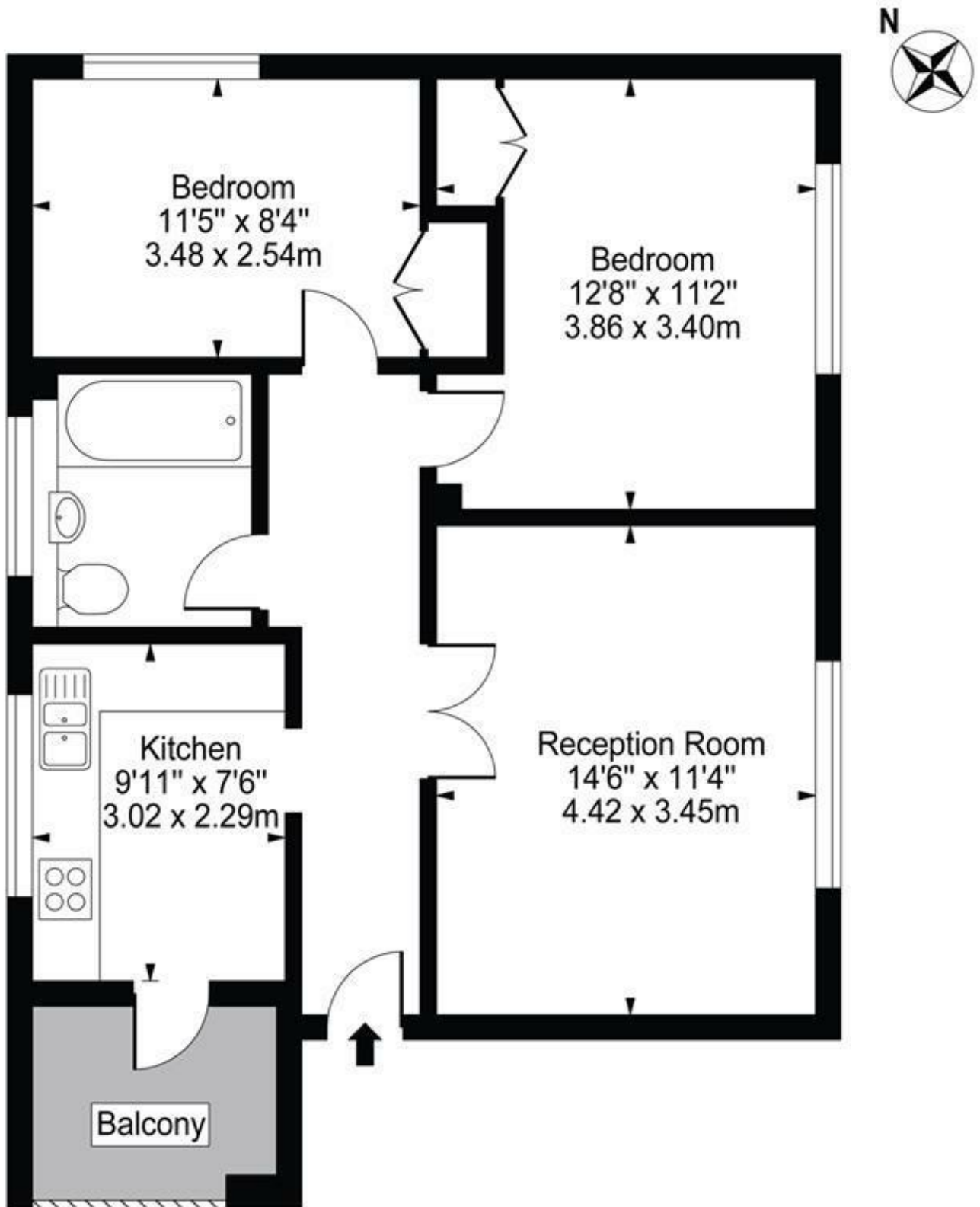
The apartment is located on the first floor of a purpose built block and comprises two double bedrooms separate kitchen and a private balcony.

Springfield Road is on the corner junction of Abbey Road and has excellent transport links on its door step. Many of which include St John's Wood jubilee line South Hampstead overground and frequent bus links on Abbey Road.



Crowland House

Approx. Gross Internal Area 637 Sq Ft - 59.18 Sq M



First Floor

For Illustration Purposes Only - Not To Scale

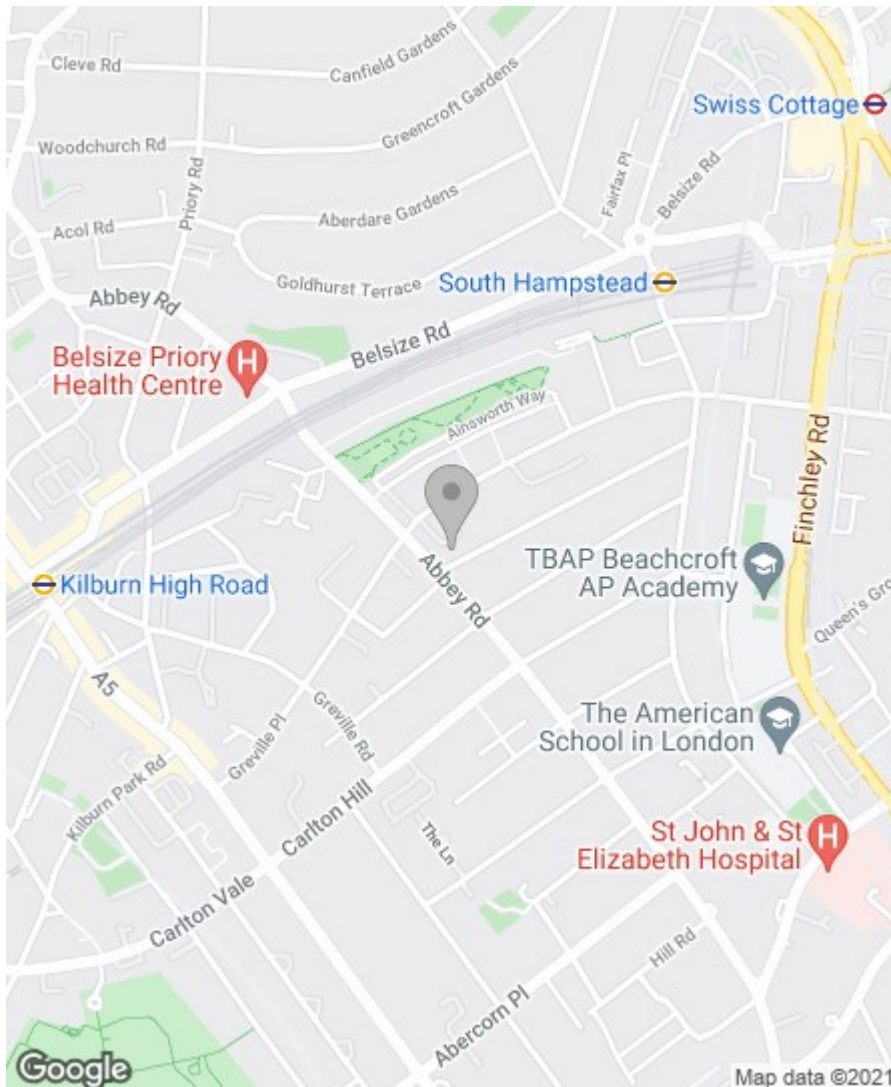
This floor plan should be used as a general outline for guidance only and does not constitute in whole or in part an offer or contract. Any intending purchaser or lessee should satisfy themselves by inspection, searches, enquiries and full survey as to the correctness of each statement. Any areas, measurements or distances quoted are approximate and should not be used to value a property or be the basis of any sale or let.

Property Overview

Location	St Johns Wood, NW8
Price	£530,000
Bedrooms	2
Bathrooms	1
Receptions	1
Council	
Tax Band	
Furnishing	null

Key Features

- Two Double bed
- Balcony
- Purpose built block
- Eat in kitchen
- Abbey Road bus links
- first floor apartment
- St Johns Wood Jubilee



Energy Efficiency Rating

	Current	Potential
<i>Very energy efficient - lower running costs</i>		
(92 plus) A		
(81-91) B		
(69-80) C		
(55-68) D		
(39-54) E		
(21-38) F		
(1-20) G		
<i>Not energy efficient - higher running costs</i>		

England & Wales

EU Directive
2002/91/EC



Environmental Impact (CO₂) Rating

	Current	Potential
<i>Very environmentally friendly - lower CO2 emissions</i>		
(92 plus) A		
(81-91) B		
(69-80) C		
(55-68) D		
(39-54) E		
(21-38) F		
(1-20) G		
<i>Not environmentally friendly - higher CO2 emissions</i>		

England & Wales

EU Directive
2002/91/EC



IMPORTANT NOTICE: All of the information is intended only as a guide to a prospective purchaser and does not constitute any part of an offer or contract. Any measurements or distances referred to herein are approximate only. Any information contained herein (whether in the text, plans or photographs) is given in good faith and cannot be relied upon as being a statement or representation of fact. Should you proceed with the purchase of the property, your solicitor must verify these details. We have not carried out a detailed survey nor tested the services, appliances and specific fittings. In accordance with current legislation we would advise you that the measurements on these particulars are imperial. The formula for conversion to metric is as follows:- 1' (one foot) = 30.4cm (centimetres), 1m (one metre) = 3'29 (feet).

